

## **Calasept® Endoline**

Directa's products are developed, tested and evaluated by our selected team of highly-qualified and renowned Swedish and international dental professionals. The aim is to make life easier for all dental professionals in their daily clinical work.

**CALASEPT® Plus**  
Calcium Hydroxide

1,5 ml

19898A

**DIRECTA**

## Long-lasting and very effective

The very high concentration of >41% calcium hydroxide, in combination with optimal calcium ion release, creates an efficient and long-lasting antimicrobial effect.

## Direct, quick and easy application

Calasept is a ready-to-use paste available in an airtight syringe, allowing for direct application through the needle. The airtight syringe eliminates the risk of incorporating air into the calcium hydroxide, turning the material into calcium carbonate.

## Optimal calcium release

Made of pure calcium hydroxide. The high concentration of calcium hydroxide creates a long-lasting effect, with the paste releasing calcium ions long after initial placement.

## One product – three indications

Can be used for temporary root fillings, direct pulp capping and indirect pulp capping in deep cavities.



### Calasept® Calcium Hydroxide

Calasept has a very high calcium hydroxide content (>41%), allowing the hydroxyl ions present to generate an elevated pH value of 12.4. This ensures that the paste has a pronounced antimicrobial effect. The high concentration of calcium hydroxide also means that Calasept is long-lasting, releasing calcium ions long after placement. Calasept is a ready-to-use paste in an airtight syringe, applied directly through the needle.

Prod No	Product Description
1230200	Calasept 2U, 2 syringes à 1,5 ml
1230100	Calasept 4U, 4 syringes à 1,5 ml
1231100	Calasept Paste Needle, 100 pcs



### Calasept® Plus Calcium Hydroxide

The consistency of Calasept Plus allows calcium hydroxide to be applied using a small and flexible plastic needle, Flexi-Tip. The autoclavable Flexi-Tip in combination with the smooth consistency is time saving and helps for precise and deep application.

Prod No	Product Description
1240100	Calasept Plus 4U, 4 syringes à 1,5 ml
1241100	Calasept Plus Flexi-Tip, 100 pcs

## Long-lasting and very effective

The very high concentration of >41% calcium hydroxide, in combination with optimal calcium ion release, creates an efficient and long-lasting antimicrobial effect.

## Smoother consistency

Calasept Plus smooth consistency allows for direct placement of calcium hydroxide in the root canal through Flexi-Tip, a small and flexible plastic needle.

## Precise and deep application with Flexi-Tip

The autoclavable Flexi-Tip, in combination with the smooth consistency, is time-saving, allowing for precise and deep application.

## One product – three indications

Multi-purpose, Calasept Plus can be used for temporary root fillings, direct pulp capping and indirect pulp capping in deep cavities.





**Calasept® EDTA**  
**irrigation agent for root canal walls**  
**chelating and smear layer removal**

Calasept EDTA has a lubricating capacity and is specially formulated to aid in the negotiation of root canals with endodontic instruments. The EDTA forms a water soluble chelate complex that decalcifies substances and dissolves smear layers, thereby increasing the adhesion of filling materials. During endodontic treatment, EDTA and sodium hypochlorite (NaOCl) are generally used intermittently. The root canal should be thoroughly rinsed with sterile water or saline solution after use of EDTA. Calasept CHX is recommended for final rinsing.

Prod No	Product Description
1260100	Calasept EDTA, 100 ml



**Calasept® CHX**  
**for irrigation during endodontic treatment**

Calasept CHX is a 2% chlorhexidine digluconate with excellent antimicrobial activity. Highly bactericidal, 2% CHX is effective against both Gram-negative and Gram-positive bacteria and is the only irrigating agent that has a high kill rate against E faecalis. Therefore, irrigation with Calasept CHX solution prior to filling a canal with root filling material is highly recommended. CHX is a very reactive compound and will form precipitates with both EDTA and NaOCl. Always rinse the canal with sterile water or saline solution before applying CHX to the canal.

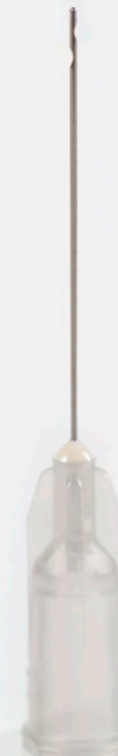
Prod No	Product Description
1270100	Calasept CHX, 100 ml



**Calasept® Irrigation Needles**  
**double-sided vent for efficient**  
**irrigation during root canal therapy**

This high quality, double-sided vent, luer lock irrigation needle ensures effective and safe irrigation when performing endodontic treatment. The double-sided openings are designed to optimize cleaning of the canals, creating a "swirl-effect". The rounded and closed tip make them safe to use.

Prod No	Product Description
1201600	Calasept Irrigation Needle 27G, Grey, 25 pcs needles
1201610	Calasept Irrigation Needle 31G, Violet, 25 pcs needles



## Calasept® & Calasept® Plus

Calasept Plus and Calasept are composed of pure calcium hydroxides. The very high concentration of >41% calcium hydroxide, in combination with optimal calcium ion release, creates an efficient and long-lasting antimicrobial effect. Calasept Plus and Calasept are radio-opaque.

Calasept is a ready-to-use paste available in an airtight syringe, allowing for direct application through the paste needle or Flexi-Tip.

The airtight syringe eliminates the risk of incorporating air into calcium hydroxide, turning the material into calcium carbonate. Calcium carbonate cannot be re-wet into calcium hydroxide.

### INDICATIONS

Temporary root-filling.  
Direct pulp capping and indirect pulp capping in deep cavities.

### DID YOU KNOW?

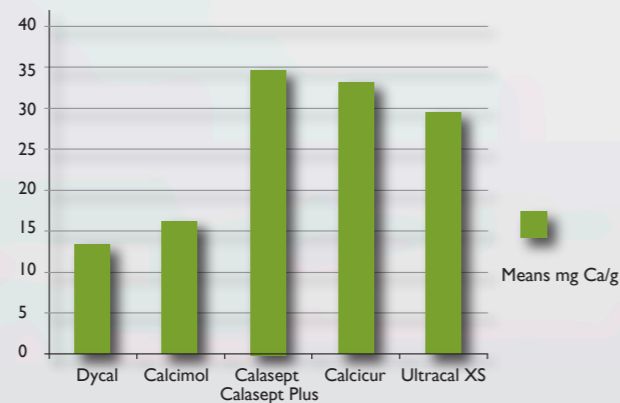
Calasept has a bactericidal effect on carious dentine.

Calasept creates a defensive response, promoting formation of hard tissue barriers.

Calasept stored in the refrigerator will not prolong its shelf-life, it only results in making the consistency thicker.



### TEST: Determination of release of calcium ions by atomic absorption.



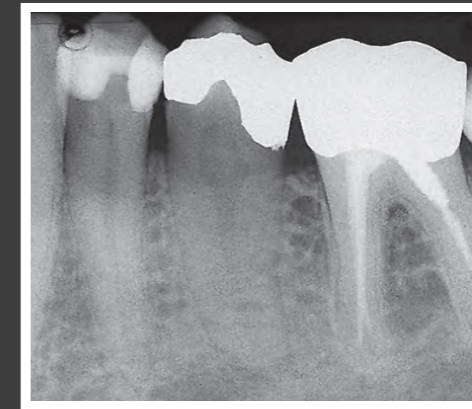
### Conclusions

A significant difference in release of calcium ions was observed between setting and pure materials. Calasept showed the highest quantity of calcium release. The values were obtained after 7 days, which is a crucial time when closing the pulp. Values can vary due to draining of molecule content in this study.

Dr. Prof. Paz Alejandro  
University J F Kennedy Argentina, University la Plata.

Argentina 2007/2008

### Temporary root-filling

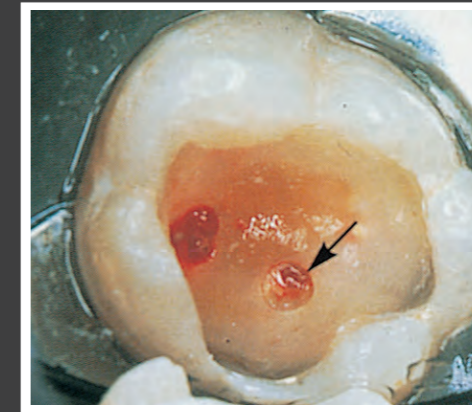


The radiograph of 35 with periapical periodontitis.



3 months later the periapical radiolucency has been replaced with new bone promoted by the Calasept.

### Direct pulp capping



Two cavities after pulpotomy of two small lesions, showing haemostasis in the mesial, first prepared cavity (arrow) and cessation of bleeding in the distal cavity.

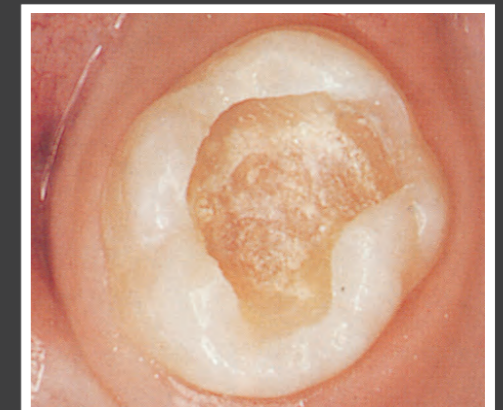


Appearance of hard-tissue barrier 3 months after pulpotomy.

### Indirect pulp capping



After gross excavation, the deepest layer of carious dentine will be covered with Calasept.



After 6 weeks the cement was removed, Calasept washed away and the excavation of the carious dentin completed without pulp exposure.





**Calasept®**

**"The original!"**

CALASEPT®  
Calcium Hydroxide

**Design By Dentists™**

Directa's products are developed, tested and evaluated by our selected team of highly-qualified and renowned Swedish and international dental professionals. The aim is to make life easier for all dental professionals in their daily clinical work.

**DIRECTA**

**DIRECTA AB**

Finvidsväg 8,  
194 47 Upplands Väsby, SWEDEN  
+46 8 506 505 75

**DIRECTA INC**

64 Barnabas Road, Unit 3  
Newtown, CT 06470, United States  
203.491.2273

**DIRECTA GERMANY**

Hammergutstr. 11  
92245 Kümmerbruck, GERMANY

info@directadental.com  
www.directadental.com  
www.directadentalgroup.com  
www.facebook.com/directadental  
www.instagram.com/directadental  
www.youtube.com/user/DirectaAB

2022-06-17\_REV03

**CALASEPT® Plus**  
Calcium Hydroxide  
1,5 ml  
19A98A

**DirectaDentalGroup**

**DIRECTA** **topdental** **ORSING** **parkell** **physics**  
forceps  
**RÖNVIG** **TrollDental** **Sendoline** **CONTACTEZ**

The contents of this brochure including layout and images are protected by copyright ©2022 Directa AB. All rights reserved.